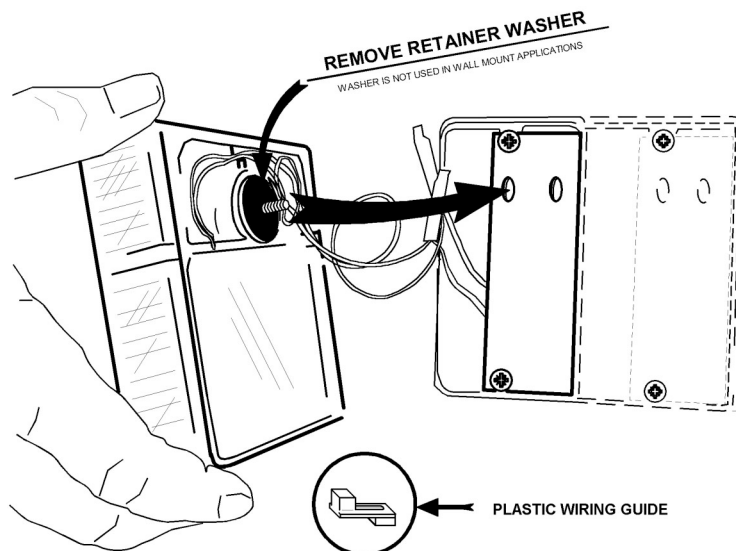
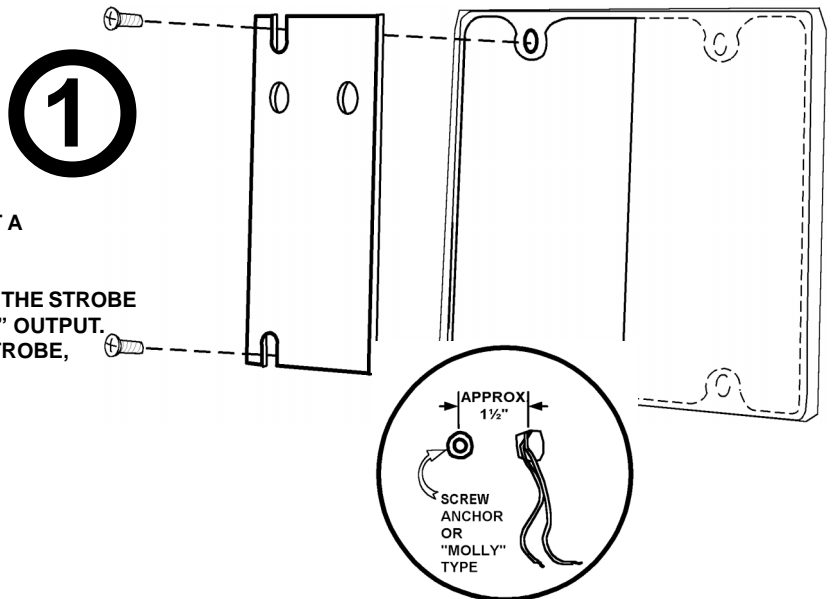


## STROBE WALL MOUNT INSTALLATION

A) IF YOUR INSTALLATION IS ONTO A SINGLE OR 2-GANG BOX, REFER TO FIG. 1. USUALLY, THE BEST CENTERING AND FIT WILL COME FROM INSTALLING THE ADAPTER PLATE IN THE POSITION SHOWN.

B) IF YOUR INSTALLATION IS ON A PLAIN WALL WITHOUT A CONDUIT BOX, REFER TO THE CIRCLED INSET.

C) CONNECT THE RED (12V+) AND BLACK (-) WIRES FROM THE STROBE TO A NON-PULSED "ALARM" OUTPUT OR "VIOLATION" OUTPUT. (MOST PULSED OUTPUTS WILL ALSO OPERATE THE STROBE, BUT THE FLASH RATE WILL BE SLIGHTLY ERRATIC.)



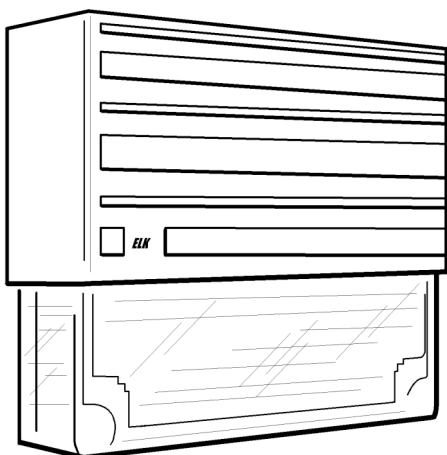
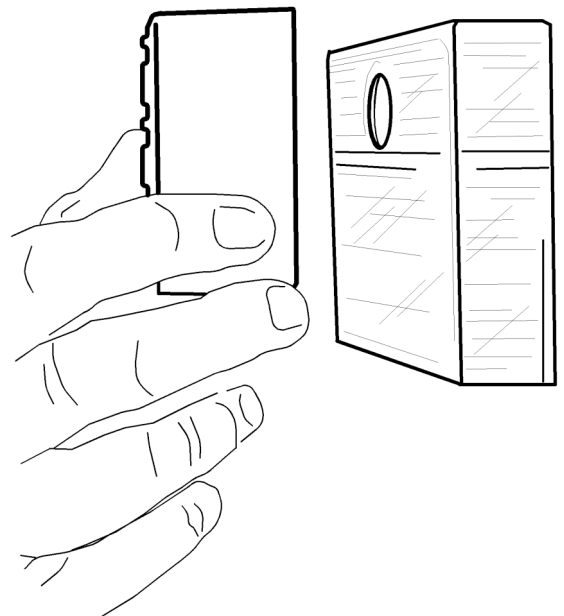
A) TWO ITEMS INCLUDED WITH THE STROBE KIT ARE NOT USED WITH A STAND-ALONE WALL MOUNT INSTALLATION:

- i) THE SCREW RETAINER WASHER IS NOT USED AND SHOULD BE REMOVED.
- ii) THE CLEAR PLASTIC WIRING GUIDE IS NOT NEEDED BUT MAY BE LEFT IN PLACE AND SIMPLY "STUFFED" INTO THE STROBE'S WIRING CAVITY.

B) FOR "SINGLE WALL BOXES: THE LEFT MOST 1/4-20 HOLE WILL PROVIDE BEST CENTERING.  
 FOR "2-GANG" BOXES: THE RIGHT HAND 1/4-20 HOLE WILL PROVIDE BEST CENTERING.  
 FOR "NO BOX" WALL MOUNT: INSTALLER MAY SUBSTITUTE A MOUNTING SCREW WHICH MATCHES THE PARTICULAR SCREW ANCHOR.

A) CAREFULLY ALIGN THE STROBE VERTICALLY, USING A 3/16 HEX (ALLEN) WRENCH, TIGHTEN THE MOUNTING SCREW, THEN SNAP THE WHITE PLASTIC COVER IN PLACE.

3



4

COMPLETED INSTALLATION.

#### SPECIFICATIONS

1. OPERATING VOLTAGE: 12 Volts D.C.
2. CURRENT DRAIN: APPROX. 140ma.
3. FLASH RATE: APPROX. 1 FLASH/SEC.

ELK PRODUCTS, INC.

PO Box 100 • Hildebran, NC 28637 • 828-397-4200 • 828-397-4415 FAX

<http://www.elkproducts.com> • email: [info@elkproducts.com](mailto:info@elkproducts.com)