

Starlite Security
Devices, LLC

Product Catalog 2016



3G/4G Security Antennas

New!

ANT-10-A

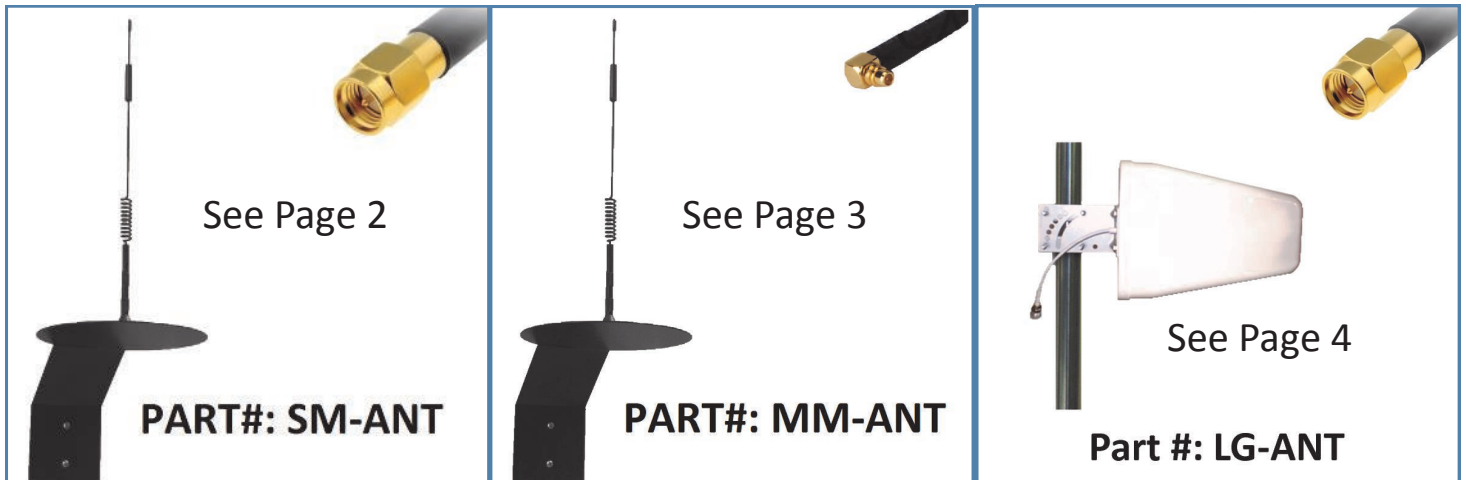
(an-ten-na)



High-gain 3G/4G antennas

Starlite Security
Devices, LLC

3 great new antennas proven to magnify the signal to most major brands of 3G/4G communicators!





DESCRIPTION

High-gain 3G/4G quad-band antenna with SMA male connector and 3 meter RG-174 cable. Uses a 16 gauge powder coated mount as its ground plane. This interior/exterior antenna is specifically designed and proven to out-perform standard factory antennas and boost the signal to TELGUARD® TG-1 Express, Napco®, UPLINK®, IPDATATEL®, DSC®, and HONEYWELL® type cellular communicators that accept a 50 ohm SMA male connector.

SPECIFICATIONS

GAIN: 7dBi

VSWR: <1.5

IMPEDANCE: 50 ohms

CABLE: 3 meter RG-174 with SMA male connector

HARDWARE: Stainless steel screws and washers, drywall anchors and masonry anchors included





DESCRIPTION

High-gain 3G/4G quad-band antenna with MMCX right angle male connector and 3 meter RG-174 cable. Uses a 16 gauge powder coated mount as its ground plane. This interior/exterior antenna is specifically designed and proven to out-perform standard factory antennas and boost the signal to ALARM.COM®, 2GIG®, DSC®, and INTERLOGIX® type cellular communicators that accept a 50 ohm MMCX male connector.

SPECIFICATIONS

GAIN: 7dBi

VSWR: <1.5

IMPEDANCE: 50 ohms

CABLE: 3 meter RG-174 with MMCX right angle male connector

HARDWARE: Stainless steel screws and washers, drywall anchors and masonry anchors included



The ALARM.COM® trademark is a federally registered trademark of Alarm.com, Inc. The INTERLOGIX® trademark is a federally registered trademark of UTC Fire & Security Americas Corporation, Inc. The 2GIG® trademark is a federally registered trademark of 2GIG Technologies, Inc. The DSC® trademark is a federally registered trademark of Tyco Safety Products Canada Ltd.



DESCRIPTION

Directional 3G/4G quad-band antenna with SMA male connector and 4 meter RG-58/U cable. This interior/exterior antenna is specifically designed and proven to out-perform standard factory antennas and boost the signal to TELGUARD® TG-1 Express, Napco®, UPLINK®, IPDATATEL®, DSC®, and HONEYWELL® type cellular communicators that accept a 50 ohm SMA male connector.

SPECIFICATIONS

GAIN: 10/11 dBi

VSWR: <1.5

IMPEDANCE: 50 ohms

CABLE: 4 meter RG-58/U with SMA male connector

BEAMWIDTH: Horizontal 90°, Vertical 50°

HARDWARE: Pole/Conduit mount hardware included. Pole/Conduit NOT included.





U.S. Patent No. 8,816,852

The Whip® is a professional grade tamper-proof HVAC security device. It attaches to the high side service valve of any air conditioner or heat pump in order to monitor the pressure inside the coils. It connects to professional security control panels or wireless transmitters in order to actuate an alarm condition when the coils are cut and the refrigerant is lost. The Whip® has 10 built-in field-selectable EOLRs so that it can be supervised by most any professional security control panel or select wireless transmitters. It also has a lead without a resistor which gives any security panel or wireless transmitter a standard closed loop (opens in alarm condition).

There are a total of 12 wire leads on The Whip® and are color coded as follows: **Blue** is Common, **Blue with White stripe** is No Resistor, **Black** is 1000 ohm resistor, **Brown** is 2000 ohm resistor, **Red** is 2200 ohm resistor, **White** is 3300 ohm resistor, **Orange** is 4700 ohm resistor, **Green** is 5600 ohm resistor, **Black with White stripe** is 10,000 ohm resistor, **Violet** is 33,000 ohm resistor, **Gray** is 47,000 ohm resistor, and **Yellow** is 470,000 ohm resistor.

Part Number: **TW-8100**

UPC-A Code



6 61799 59570 4

Gas Leak Detector

Whenever the TW-8100 is connected to any HVAC system, the connection should be tested for refrigerant leaks. Gas Leak Detector is suited to do just that. When applied liberally to all connection joints, Gas Leak Detector effectively detects refrigerant leaks by bubbling. Very small leaks form a foam over a period of several minutes (depending on the size of the leak). Gas Leak Detector comes in an 2oz squeeze bottle.

SOAPY WATER IS NOT AN EFFECTIVE SUBSTITUTE FOR GAS LEAK DETECTOR.

REMEMBER THAT THE TW-8100 SHOULD **NOT BE TIGHTENED WITH TOOLS (FINGER TIGHTEN ONLY)**. USING TOOLS TO TIGHTEN THE TW-8100 WILL VOID THE PRODUCT WARRANTY.

Part Number: **GLD-2**
(single bottle)

UPC-A Code



Leak Lock®

In this case, Leak Lock® is not used to lock out leaks. However, one **small dot** of this product applied to the male threads of the HVAC system's service valve will help prevent The Whip® from being loosened after the installation due to vibration of the HVAC system. This product comes in a 1.33 ounce squeeze tube and should be enough to install many TW-8100 devices.

Make sure to **Shake Well** before using Leak Lock®.

REMEMBER THAT THE TW-8100 SHOULD **NOT BE TIGHTENED WITH TOOLS (FINGER TIGHTEN ONLY)**. USING TOOLS TO TIGHTEN THE TW-8100 WILL VOID THE PRODUCT WARRANTY.

Model Number: **LL-113**

(single tube)

UPC-A Code



The Leak Lock® trademark is a federally registered trademark of Highside, Inc.

1/4" to 5/16" Mini-Split Adaptor

HVAC systems use 1/4 inch service valves except for Mini-Split Air Conditioners. Mini-Split Air Conditioners use a 5/16 inch service valve. The TW-8100 uses a 1/4 inch fitting, so in order to connect it to a Mini-Split Air Conditioner the installer will need to use the Mini-Split Adaptor.

Simply connect the TW-8100 to the Mini-Split Adaptor **FIRST**. Make sure to use a small dot of Leak Lock® on the male threads of the Mini-Split Adaptor and the service valve before making the connection. Then connect the assembly to the Mini-Split Air Conditioner's service valve. It is that easy!

REMEMBER THAT THE TW-8100 SHOULD **NOT BE TIGHTENED WITH TOOLS (FINGER TIGHT ONLY)**. USING TOOLS TO TIGHTEN THE TW-8100 WILL VOID THE PRODUCT WARRANTY.

Part Number: **AD-410**

UPC-A Code



Pictured to the Right is an example of a Mini-Split Air Conditioner system. The piece on the bottom is the exterior unit where The Whip® will be installed. The longer unit on top is the piece that is inside of the climate controlled area and circulates the conditioned air.

