



StarLink™ SL^e-SMTCHG Smart Charge Module

INSTALLATION INSTRUCTIONS

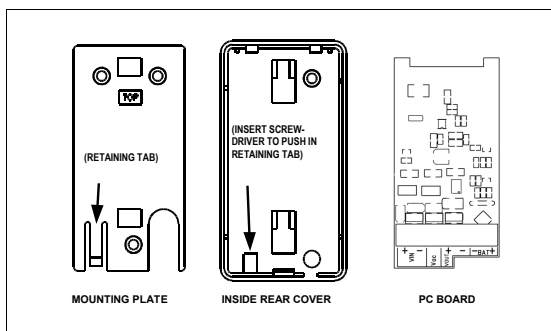
333 Bayview Avenue
Amityville, New York 11701
For Sales and Repairs, (800) 645-9445
For Technical Service, (800) 645-9440
Publicly traded on NASDAQ Symbol: NSSC

© NAPCO 2011

WI1946 09/11

INTRODUCTION

The StarLink™ SL^e-SMTCHG Smart Charge Module is an accessory to the SL^e-GSM Alarm Capture Communicator. The SL^e-SMTCHG Smart Charge Module provides over-current protected power to the SL^e-GSM and also charges a separate back-up battery used to power the SL^e-GSM during AC failure. The StarLink™ SL^e-GSM Alarm Capture Communicator is a fully supervised, wireless digital two-way subscriber unit supported by an extensive nationwide wireless network. See WI1936 for installation instructions and additional information.



SL^e-SMTCHG Smart Charge Module Component Parts

The StarLink™ SL^e-SMTCHG Smart Charge Module must be mounted within the same enclosure as the system alarm control panel. The power input (140mA maximum) is wired to the control panel auxiliary input terminals and the AC input is wired to one of the two control panel AC input terminals.

When the unit is powered, the SL^e-SMTCHG draws 140mA from the control panel; when AC is not present, zero (0) current is drawn from the control panel standby battery as all of the current required for the SL^e-SMTCHG is provided by the SL^e-SMTCHG separate back-up battery.

INSTALLATION

Choose a mounting location inside the control panel housing or enclosure appropriate for the application. See above diagram for location of the "retaining tab" (allows the Rear Cover to separate from the Mounting Plate). Use the template at the back of these instructions to drill holes in the metal enclosure and mount the power supply to the side of the enclosure using the screws and nuts provided. The battery MUST be installed in the control panel housing or enclosure.

SPECIFICATIONS

Electrical

Input Current: 140mA when AC is present, 0mA standby (when AC is not present)

Output Voltage: 13.7-11.6VDC

Overcurrent Protection: 70mA

Maximum Battery Charging Current: 70mA

Battery: 12V, 4AH

Physical

Dimensions (HxWxD): 3 1/8" x 1.5" x 1" (7.9 x 3.8 x 2.5 cm)

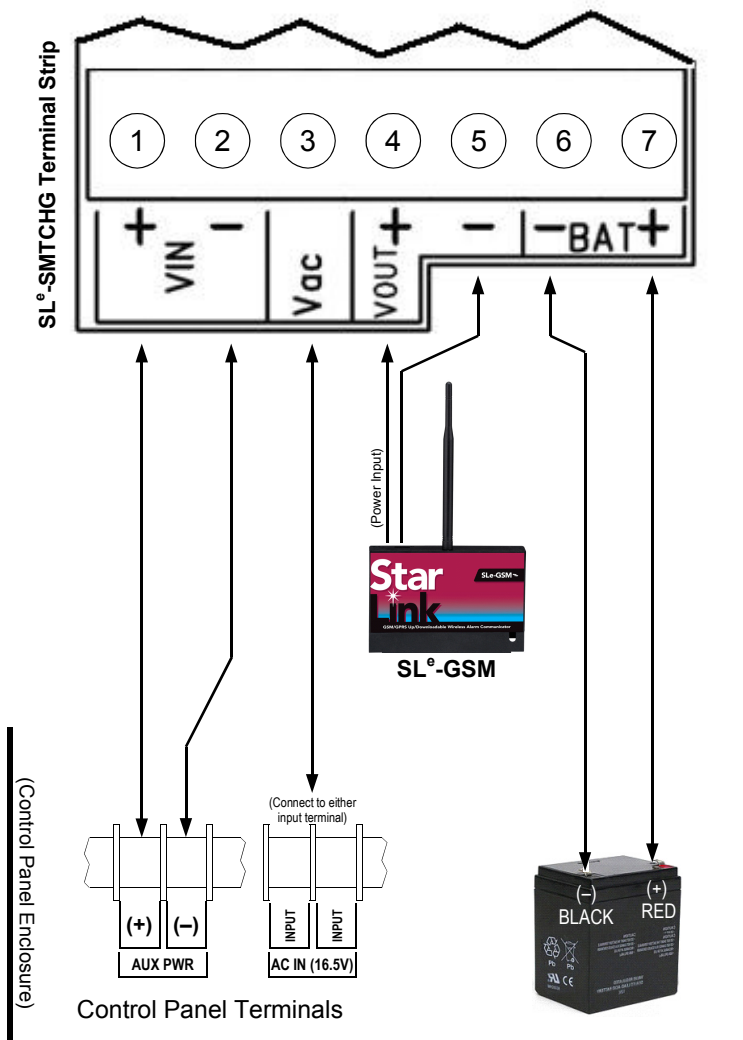
Environmental

Operating Temperature: -30°C - 55°(-22°F - 131°F)

Humidity: 95% Non-Condensing

TERMINAL DESCRIPTIONS

- 1: **V IN (+)**: Connect to the control panel Aux Power (+12V).
- 2: **V IN (-)**: Connect to the control panel Aux Power (-12V).
- 3: **VAC**: Connect to either control panel 16.5VAC transformer AC input terminal.
- 4: **VOUT (+)**: Connect to the SL^e-GSM positive power input terminal.
- 5: **VOUT (-)**: Connect to the SL^e-GSM negative power input terminal.
- 6: **BAT (-)**: Connect to a 4AH 12V battery negative terminal using black flying lead with battery connector (provided).
- 7: **BAT (+)**: Connect to a 4AH 12V battery positive terminal using red flying lead with battery connector (provided). The red non-power limited positive [+] battery flying lead must be secured at least 1/4" away from power-limited wires.



NAPCO LIMITED WARRANTY

NAPCO SECURITY SYSTEMS, INC. (NAPCO) warrants its products to be free from manufacturing defects in materials and workmanship for eighteen *months* following the date of manufacture. NAPCO will, within said period, at its option, repair or replace any product failing to operate correctly without charge to the original purchaser or user.

This warranty shall not apply to any equipment, or any part thereof, which has been repaired by others, improperly installed, improperly used, abused, altered, damaged, subjected to acts of God, or on which any serial numbers have been altered, defaced or removed. Seller will not be responsible for any dismantling or reinstallation charges.

THERE ARE NO WARRANTIES, EXPRESS OR IMPLIED, WHICH EXTEND BEYOND THE DESCRIPTION ON THE FACE HEREOF. THERE IS NO EXPRESS OR IMPLIED WARRANTY OF MERCHANTABILITY OR A WARRANTY OF FITNESS FOR A PARTICULAR PURPOSE. ADDITIONALLY, THIS WARRANTY IS IN LIEU OF ALL OTHER OBLIGATIONS OR LIABILITIES ON THE PART OF NAPCO.

Any action for breach of warranty, including but not limited to any implied warranty of merchantability, must be brought within the six months following the end of the warranty period. IN NO CASE SHALL NAPCO BE LIABLE TO ANYONE FOR ANY CONSEQUENTIAL OR INCIDENTAL DAMAGES FOR BREACH OF THIS OR ANY OTHER WARRANTY, EXPRESS OR IMPLIED, EVEN IF THE LOSS OR DAMAGE IS CAUSED BY THE SELLER'S OWN NEGLIGENCE OR FAULT.

In case of defect, contact the security professional who installed and maintains your security system. In order to exercise the warranty, the product must be returned by the security professional, shipping costs prepaid and insured to NAPCO. After repair or replacement, NAPCO assumes the cost of returning products under warranty. NAPCO shall have no obligation under this warranty, or otherwise, if the product has been repaired by others, improperly installed, improperly used, abused, altered, damaged, subjected to accident, nuisance, flood, fire or acts of God, or on which any serial numbers have been altered, defaced or removed. NAPCO will not be responsible for any dismantling, reassembly or reinstallation charges.

This warranty contains the entire warranty. It is the sole warranty and any prior agreements or representations, whether oral or written, are either merged herein or are expressly cancelled. NAPCO neither assumes, nor authorizes any other person purporting to act on its behalf to modify, to change,

or to assume for it, any other warranty or liability concerning its products.

In no event shall NAPCO be liable for an amount in excess of NAPCO's original selling price of the product, for any loss or damage, whether direct, indirect, incidental, consequential, or otherwise arising out of any failure of the product. Seller's warranty, as hereinabove set forth, shall not be enlarged, diminished or affected by and no obligation or liability shall arise or grow out of Seller's rendering of technical advice or service in connection with Buyer's order of the goods furnished hereunder.

NAPCO RECOMMENDS THAT THE ENTIRE SYSTEM BE COMPLETELY TESTED WEEKLY.

Warning: Despite frequent testing, and due to, but not limited to, any or all of the following; criminal tampering, electrical or communications disruption, it is possible for the system to fail to perform as expected. NAPCO does not represent that the product/system may not be compromised or circumvented; or that the product or system will prevent any personal injury or property loss by burglary, robbery, fire or otherwise; nor that the product or system will in all cases provide adequate warning or protection. A properly installed and maintained alarm may only reduce risk of burglary, robbery, fire or otherwise but it is not insurance or a guarantee that these events will not occur. CONSEQUENTLY, SELLER SHALL HAVE NO LIABILITY FOR ANY PERSONAL INJURY, PROPERTY DAMAGE, OR OTHER LOSS BASED ON A CLAIM THE PRODUCT FAILED TO GIVE WARNING. Therefore, the installer should in turn advise the consumer to take any and all precautions for his or her safety including, but not limited to, fleeing the premises and calling police or fire department, in order to mitigate the possibilities of harm and/or damage.

NAPCO is not an insurer of either the property or safety of the user's family or employees, and limits its liability for any loss or damage including incidental or consequential damages to NAPCO's original selling price of the product regardless of the cause of such loss or damage.

Some states do not allow limitations on how long an implied warranty lasts or do not allow the exclusion or limitation of incidental or consequential damages, or differentiate in their treatment of limitations of liability for ordinary or gross negligence, so the above limitations or exclusions may not apply to you. This Warranty gives you specific legal rights and you may also have other rights which vary from state to state.