

The Panic Pendant is a supervised portable device used to trigger a panic alarm.

Features

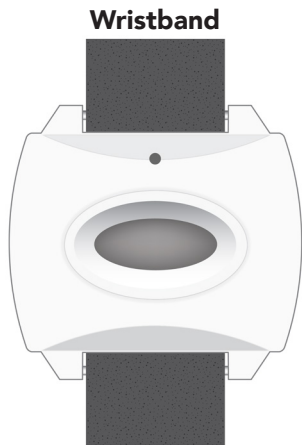
- Water resistant housing
- Low battery indication
- Secure encrypted wireless transmissions
- Can be worn with a lanyard or wristband
- 2-year warranty



Enroll the panic by placing the panel into wireless enrollment mode and pressing the red panic button. Alternatively, the panic can be enrolled by entering its 8-character serial number on the interactive service provider's web portal.

Operate by pressing the red panic button until the LED starts flashing.

Wear using the included lanyard or wristband. Note: To install the wristband you must first remove the clear plastic tube used to attach the lanyard.



Specifications

Physical	
Housing Dimensions	1.5 x 1.2 x .6 inches (3.8 x 3.0 x 1.5 centimeters)
Weight with Battery	0.6 ounces (18 grams)
Environmental	
Operating Temperature	32°F to 120°F (0°C to 49°C)
Maximum Humidity	85% non-condensing relative humidity
Sensor Specifications	
Frequency	319.5 MHz
Replacement Battery	One Panasonic CR1632
Nominal Battery Life	4-6 Years
Transmitted Indications	Low Battery, Panic, Supervision
Certification	
RE103	FCC, IC

Specifications subject to change without notice

WARRANTY

Alula will replace all non-portable products that are defective in their first five (5) years, and all portable products that are defective in their first two (2) years.

IC NOTICE

This device complies with Industry Canada license-exempt RSS standard(s). Operation is subject to the following two conditions:

- (1) This device may not cause interference, and
- (2) This device must accept any interference, including interference that may cause undesired operation of the device.

Le présent appareil est conforme aux cnr d'Industrie Canada applicables aux appareils radio exempts de licence. L'exploitation est autorisée aux deux conditions suivantes:

- (1) L'appareil ne doit pas produire de brouillage, et
- (2) L'utilisateur de l'appareil doit accepter tout brouillage radioélectrique subi, même si le brouillage est susceptible d'en compromettre le fonctionnement.

IC: 8310A-RE103

FCC NOTICE

This device complies with Part 15 of the FCC rules. Operation is subject to the following two conditions:

- (1) This device may not cause harmful interference.
- (2) This device must accept any interference that may be received, including interference that may cause undesired operation.

Changes or modifications not expressly approved by Alula could void the user's authority to operate this equipment.

FCC ID: U5X-RE103

TRADEMARKS

Alula is a trademark owned by Alula Holdings, LLC.

"Interlogix" is a trademark owned by United Technologies Electronic Controls Inc.

Alula products will function with Interlogix systems. However, no Alula product is produced by, endorsed by, or is officially associated with Interlogix.

Alula recommends verifying proper enrollment and operation, per control panel installation instructions, at installation.