



ESMGS8-P4-B Series

Industrial Managed Gigabit Ethernet Switch with PoE+
12 ports: 8 PoE+ ports and 4 SFP ports



Product Description

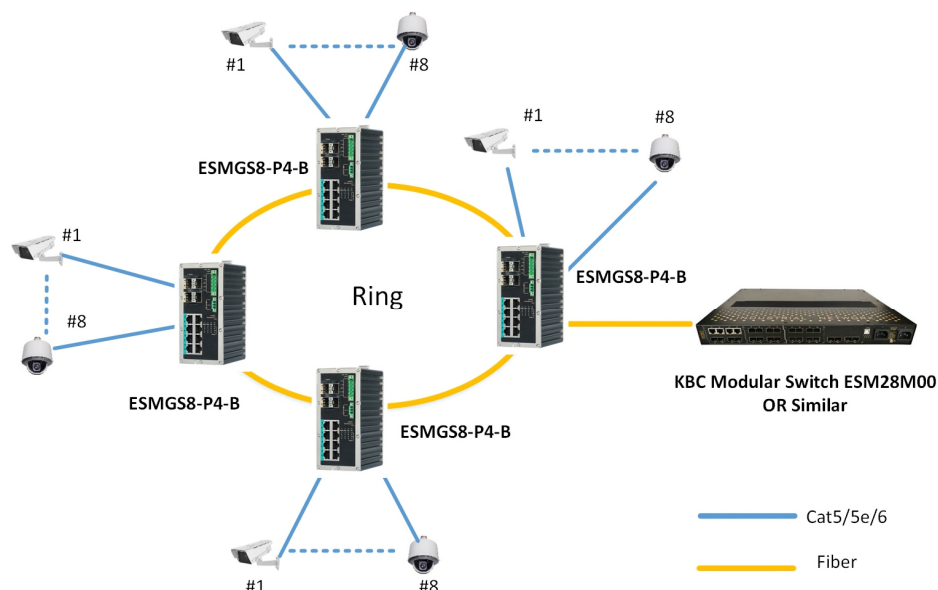
The KBC ESMGS8-P4-B Series is a high performance, 12 port, industrial, managed Gigabit switch with eight 10/100/1000M PoE ports and four gigabit SFP ports. The eight PoE ports support IEEE802.3af/at standard. The switch supports Ethernet Ring Protection Switching (ERPS) as well as STP/RSTP/MSTP. It also supports Web-based network management, VLAN, QoS, SNMP, IGMP snooping and other network functions. LED indicators provide the connection status when using SFP option. Rugged design with IP40 enclosure and industrial level 3 ESD protection makes it suitable for applications such as Intelligent Transportation Systems, IP surveillance and industrial networks. The product is available in either DIN rail or wall-mount configurations.



Product Features

- 8* 10/100/1000Base-T Ethernet ports (PoE)
- 4* 1000BASE-X SFP ports
- EPRS (typical recovery time < 30ms over 250 units of connection)
- Different redundancy protocols and standards STP/RSTP/MSTP
- SNMPv1/v2c/v3 & RMON & Port base/802.1Q VLAN network management
- WEB, Telnet, SSH, Console(CLI)
- Open and close port, binding MAC and port
- 802.1x network access control
- 802.1Q protocol, Isolate network flow
- Radius Centralized password management
- IGMP Snooping multicast function
- IEEE802.3af/at standard
- Overload current protection and reverse polarity protection
- LED displays connection status when using SFP
- IP40 enclosure protection
- Unique DIN mount design makes mounting and removal simple
- Both PoE and Non-PoE models are available

Typical System Configuration



Specifications

Standards

IEEE Ethernet Standards	IEEE802.3, IEEE802.3u, IEEE 802.1ab, IEEE802.3z, IEEE 802.3x, IEEE 802.3ad, IEEE 802.1d, IEEE 802.1p, IEEE 802.1q, IEEE 802.1w, IEEE 802.1s, IEEE 802.1x, IEEE 802.1ab
-------------------------	--

Ports

10/100/1000MBase-T	8
1000MBase-X SFP ⁽¹⁾	4

Switch Performance

Architecture	Store-and-forward
Bandwidth	24Gbps
Buffer	4M
Mac Address Table	8192

PoE

Standard	IEEE802.3af/at
PSE Type	End-span
Power Pin Assignment	1/2 (+), 3/6 (-)
Power Output ⁽²⁾	Each port up to 30W

Management

Port configuration	Port enable/disable; Port rate settings; Full-duplex mode; Flow control
VLAN	4K VLAN; Port-based VLAN; 802.1Q VLAN protocol
Multicasting	SNMP V1/V2/V3 protocols; IGMP Snooping; IGMP multicast group:1024

Console Port

USB(115200-8-N-1)

Mechanical

Enclosure	IP40
Dimension (WxDxH)	68mm x 102.5mm x 146mm
Weight	0.9kg

PoE Management

Total Power Consumption Control; PoE ON/OFF; Port Output Priority

Security Feature

Enable/disable ports
MAC based port security
Port based network access control (802.1x) VLAN (802.1Q)
Radius centralized password management
SNMP v1/v2c/v3 encrypted authentication and access security

Protocols

ERPS/STP/RSTP/MSTP, SNMP, 1588 PTP Client
DHCP Server/Client, MVR, IGMP v1/v2
GMRP, GVRP, SNMP v1/v2c/v3, TFTP, SMTP
RMON, RARP, HTTP, HTTPS, Telnet, SSH, Syslog, LLDP, IPv6, NTP Server/Client

Warning & Monitoring

Relay output for fault event alarming
Syslog to record and view events
Event warning notification via email
Event selection support

Relay Output

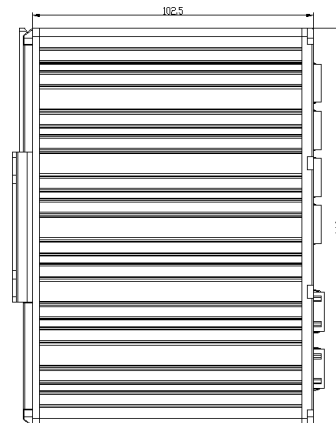
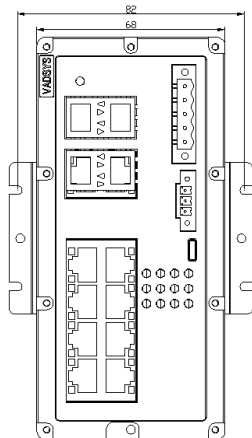
1A@24VDC NC or NO

Power ⁽³⁾

Redundant Power Input	46 ~ 57Vdc
Power Consumption	< 10W (without PoE output)
POE budget	240W
Overload Current Protection	Yes
Reverse polarity protection	Yes

Environmental

Operating Temperature	-40° ~ +75°C
Storage Temperature	-40° ~ +85°C
Operating Humidity	5% to 95% non-condensing



Order Information

ESMGS8 – P4 – B: Managed, 8*10/100/1000 Base-T POE/POE+, 4 Gigabit SFP

ESMGN8 – P4 – B: Managed, 8*10/100/1000 Base-T, 4 Gigabit SFP

1. SFP module sold separately.
2. Each port supports maximum 30W output. Output can be managed via Web software.
3. Power supply sold separately.

Due to ongoing technological improvements, product specifications are subject to change without notice. KBC is not liable for any errors, omissions or changes of any description of the goods contained herein. This information is for the sole purpose of identifying the products and KBC makes no warranty that the products conform to any description contained herein. Do not rely solely on any representations, statements, or assertions concerning these Products contained herein.