

# INSTALLATION MANUAL – Indoor/Outdoor Pole Mount Kit

## Unpacking

Unpack carefully. This is mechanical equipment and should be handled with care. If an item appears to have been damaged in shipment, replace it properly in its carton and notify the shipper. If any items are missing, notify the vendor. The shipping carton is the safest container in which the unit may be transported. Save it for possible future use.

## Service

If the unit ever needs repair service, the customer should contact the vendor for a return materials authorization (RMA) and shipping instructions.

## Care and Maintenance

Perform routine maintenance to keep the unit dust free.

## Model Designation

2020PLMK Indoor/Outdoor Pole Mount Kit

## Description

The 2020-PLMK is a pole mount kit for mounting the 2020-WMA to a pole. The pole mount bracket is designed to provide easy and secure wall mount arm to round poles with a varying diameter from 3" – 12". The bracket can be secured to round poles using stainless steel straps included with this kit. Hardware kit included.

## Certification

Camera installation should be performed by a licensed professional and conform to the National Electrical Code (NEC) and any applicable local codes.

## Installation

1. Run conduit up pole and through hole at the bottom of the pole mount; attach conduit to 90-degree fitting.
2. Run cables through conduit and fitting. Leave enough slack to cable through 2020-WMA mount to RLS-2020.
3. Attach pole mount to pole using hole clamps provided.
4. Run cable through mount; attach mount to pole mount.
5. Make wiring connections to the RLS-2020 per instructions included with the unit.
6. Attach RLS-2020 to wall arm per instructions included with 2020-WMA

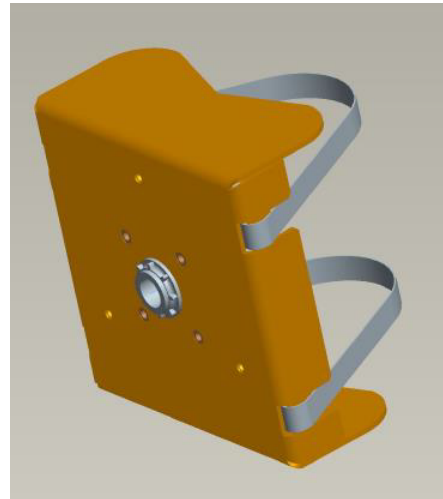


Figure 1 - Pole Mount Bracket (Front)

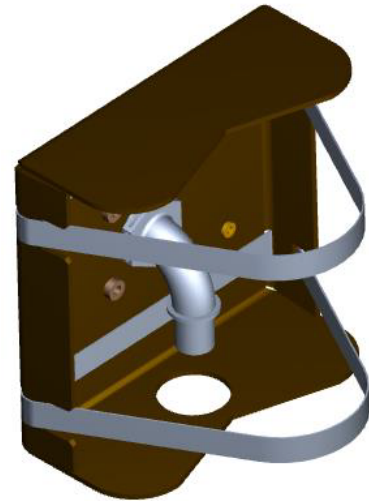


Figure 2 - Pole Mount Bracket (Rear)

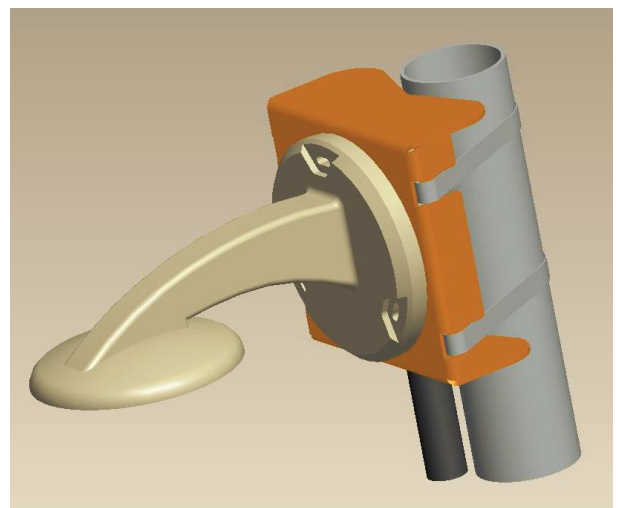


Figure 3 - Pole Mount Bracket with 2020-WMA attached