

HES[®] 8000 Electric Strike

ASSA ABLOY

The global leader in
door opening solutions



The concealed electric strike solution for cylindrical locksets.

Saves Time

- No cutting into the face of the frame
- Field selectable 12 or 24 VDC/VAC
- Accommodates door sag with patented vertical adjustability

Superior Aesthetics

- Completely concealed and requires no cutting on the face of the frame
- Available in today's most popular finishes
- Fits in standard ANSI prep

Quality and Flexibility

- ANSI/BHMA A156.31, Grade 1
- UL 1034, burglary-resistant listed
- UL 294 listed



Grade 1



SecuriCare
Warranty



Cylindrical
Locksets



Field Selectable
(Fail secure
/Fail safe)



Dual Voltage
12/24



PoE
Friendly



Outdoor
Rated



Burglary
Rated

No Cutting | Vertical Adjustment | Cylindrical Latchbolts

Dimensions

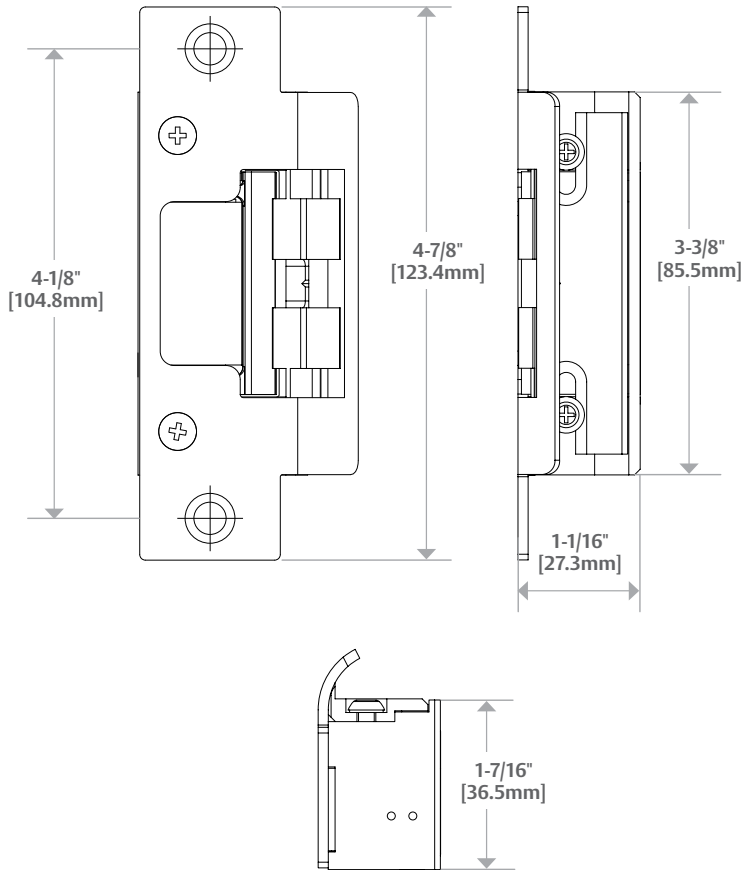


Diagram shown with 801 Option

Specifications

Certifications

- ANSI/BHMA A156.31, Grade 1
- UL 1034 burglary-resistant listed and suitable for outdoor use
- UL 294 listed
- RoHS compliant

Frame Application

- Metal
- Wood

Electrical (DC Continuous Duty)

- Dual voltage 12/24 VDC/VAC
- 240 mA at 12 VDC/120 mA at 24 VDC

Features

Standard Features

- No cutting on frame required
- Vertical adjustability to accommodate door sag and misalignment
- Tamper-resistant
- Static strength 1,500 lbs
- Dynamic strength 70 ft-lbs
- Endurance 1 million cycles
- Field selectable fail secure/fail safe
- Non-handed
- Internally mounted solenoid

- Accommodates 1/2" – 5/8" cylindrical latchbolt (5/8" with 1/8" [3.175mm] door gap)
- Strike body depth 1-1/16"
- Strike body width 1-7/16"
- SecuriCare five-year, no-fault, no questions asked warranty

Optional Features

- **LBM** Latchbolt monitor

Accessories

- **2001M** Plug-in bridge rectifier
- **2004M** ElectroLynx® adapter
- **2005M3** SMART Pac® III
- **2006M** Plug-in buzzer

How to Order

Series	Model	Finish*	Option(s)
8000	—	— 630	— LBM
8000 Universal Electric Strike; Faceplates ordered separately	C* Complete Electric Strike; Includes the 801 and 5801A faceplates	605 Bright Brass 606 Satin Brass 612 Satin Bronze 613 Bronze Toned 629 Bright Stainless Steel 630 Satin Stainless Steel BLK Black	LBM Latchbolt Monitor